



# Thámova 16

## OFFICES AND SERVICES PRICE LIST



[info@officesunlimited.cz](mailto:info@officesunlimited.cz)  
+420 702 278 224

6th floor, Thámova 16,  
Prague 8, Karlín 186 00

# OFFICES AND SERVICES PRICE LIST

## Offices With Indefinite Lease Terms



### OFFICE 1

Net floor area	60 sq. m.
Total floor area	74 sq. m.
Monthly lease with no services	-
Services	-
Total monthly lease including services	-
Capacity	12 people
Current occupancy	leased

### OFFICE 2

Net floor area	28,80 sq. m.
Total floor area	36 sq. m.
Monthly lease with no services	-
Services	-
Total monthly lease including services	-
Capacity	6 people
Current occupancy	leased

### OFFICE 3

Net floor area	35 sq. m.
Total floor area	43 sq. m.
Monthly lease with no services	-
Services	-
Total monthly lease including services	-
Capacity	8 people
Current occupancy	leased

### STUDIO

Net floor area	62,60 sq. m.
Total floor area	77 sq. m.
Monthly lease with no services	-
Services	-
Total monthly lease including services	-
Capacity	12 people
Current occupancy	leased

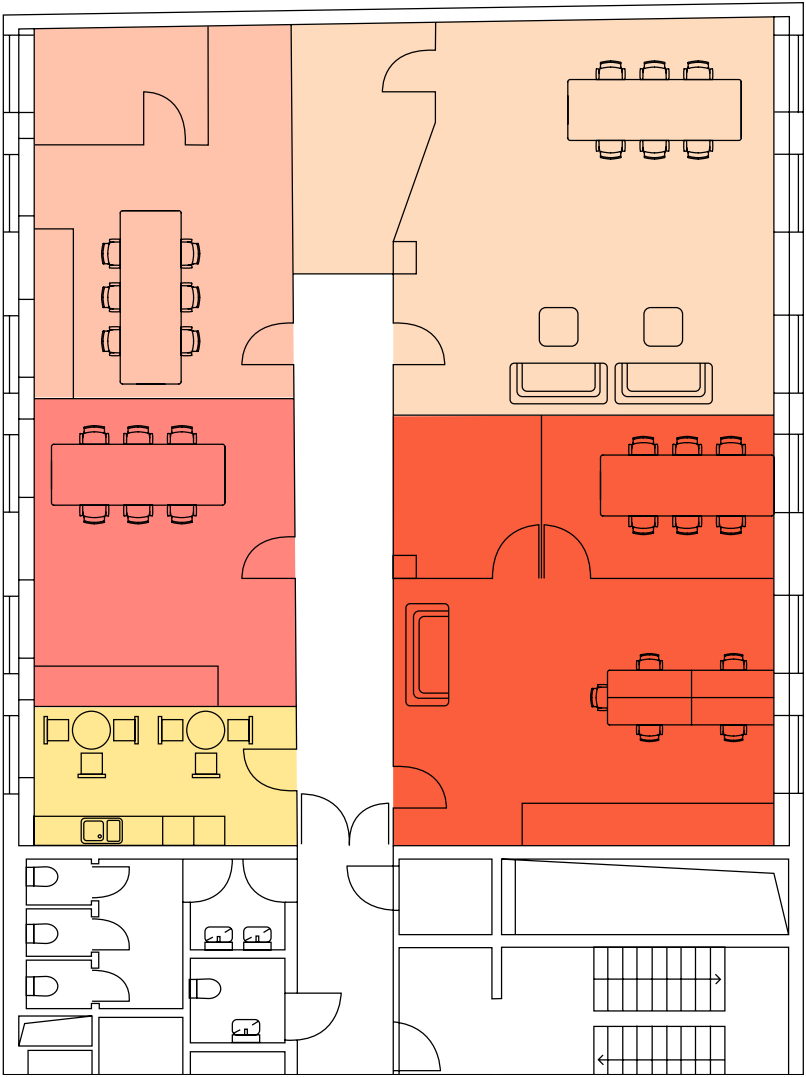
The prices are listed without VAT.



info@officesunlimited.cz  
+420 702 278 224

6th floor, Thámova 16,  
Prague 8, Karlín 186 00

# FLOORPLAN



- private office 1
- private office 2
- private office 3
- studio
- kitchenette



info@officesunlimited.cz  
+420 702 278 224

6th floor, Thámova 16,  
Prague 8, Karlín 186 00

# OFFICES AND SERVICES PRICE LIST



Parking in underground garages	EUR 100 / month / space + services CZK 250 / month / space
Flexi parking Mr. Parkit (210 W x 500 L x 200 H)	For current parking prices, visit <a href="http://www.mrparkit.com">www.mrparkit.com</a>
Private office cleaning services	included in the advance payment for services
Company headquarters	free
Entrance key + chip	free / 2 sets

The prices are listed without VAT.

# PRICE LIST - FURNITURE RENTAL

## Premium



**VITRA chair**  
(Meda, Meda Pro, AM chair, Physix)

CZK 500 / month



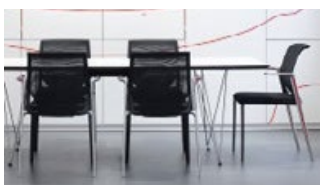
**MASTER&MASTER table**  
**Flat Diamond**

CZK 750 / table / month  
140 x 70 cm



**VITRA Workit table**

CZK 1,000 / table / month  
360 x 180 cm



**SAD table**

CZK 2,000 / table / month  
400 x 130 cm



**MASTER&MASTER rack**

CZK 1,000 / 1 pcs / month  
Rack 776 x 802 x 290 mm

Furniture rented based on availability.



[info@officesunlimited.cz](mailto:info@officesunlimited.cz)  
+420 702 278 224

6th floor, Thámova 16,  
Prague 8, Karlín 186 00

# PRICE LIST - FURNITURE RENTAL

## Standard



**IKEA chair**  
(LÅNGFJÄLL, HATTEFJÄLL)

CZK 250 / month



**IKEA BEKANT table**

CZK 500 / month



**IKEA rack**  
(FJÄLKINGE, VITTSJÖ)

CZK 500 / 1 pcs / month  
Fjalkinge rack 118 x 193 cm  
VITTSJO rack 100 x 175 cm



**IKEA drawer unit**

CZK 250 / 1 pcs / month

Furniture rented based on availability.